



RFID for the jewelry industry





Jewelers are constantly asking questions: how to promptly make a shipment or accept the goods? How to quickly take an inventory of the sales area and shop windows? How to distribute products to outlets and avoid misgrading?

Until recently, all these processes required the participation of a large number of people, financial investments, took a lot of time and were not effective.

RFID system features



- Quick item counting
- Automation of acceptance / shipment processes
- Obtaining product information without opening the bulk packaging
- Exclusion of misgrading
- Fast and efficient inventory
- Obtaining data for the analysis of demand for specific products
- Informing customers about current promotions
- Anti-theft function

Benefits of Implementing an RFID System

- The minimum set of equipment
- Easy integration with accounting system
- The system is easy to use.
- The order process takes a few minutes
- Accompanying documents are generated automatically



Marking options

Jewelry label with integrated RFID tag

It is made specifically for the customer and has a unique design.

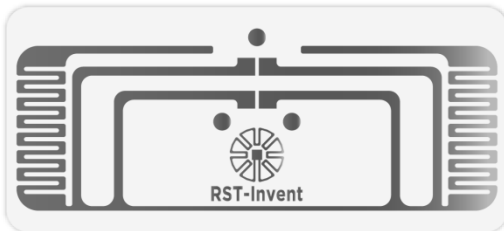
- Comes in rolls
- Used for labeling new products and re-labeling
- The tag may be “hidden” in the label
- The encoding of the built-in RFID tag and the printing of information on tags is done using the RFID printer



WinnyTag Duo self-adhesive RFID tag

Translucent or paper RFID tags in the form of a sticker

- Used for marking stocks using RFID technology
- Size 26x12 mm



Desktop RFID readers



RST-CUBE

- Automatic group identification of small items
- Up to 50 units at a time
- The special case design limits the RFID tag registration area and excludes reading tags outside this area



Bookos slim

- Piece identification of products
- Up to 10 units at a time
- Case thickness only 14 mm
- Connects to PC, compatible with Android tablets and smartphones
- Can connect to cash registers for the sale of products
- Applicable when re-wiring products

Mobile RFID Readers



Designed for reading RFID tags in conditions without access to power sources, as well as outdoors.

- Read RFID tags during product search
- Inventory of a warehouse, a trading floor or office premises, acceptance of products in stores
- Automatically transfers data on all operations to the RFID system via wireless Wi-Fi or GSM
- Allows to read RFID tags autonomously at a distance of up to 7 m

Additional RFID equipment



RFID-BOX

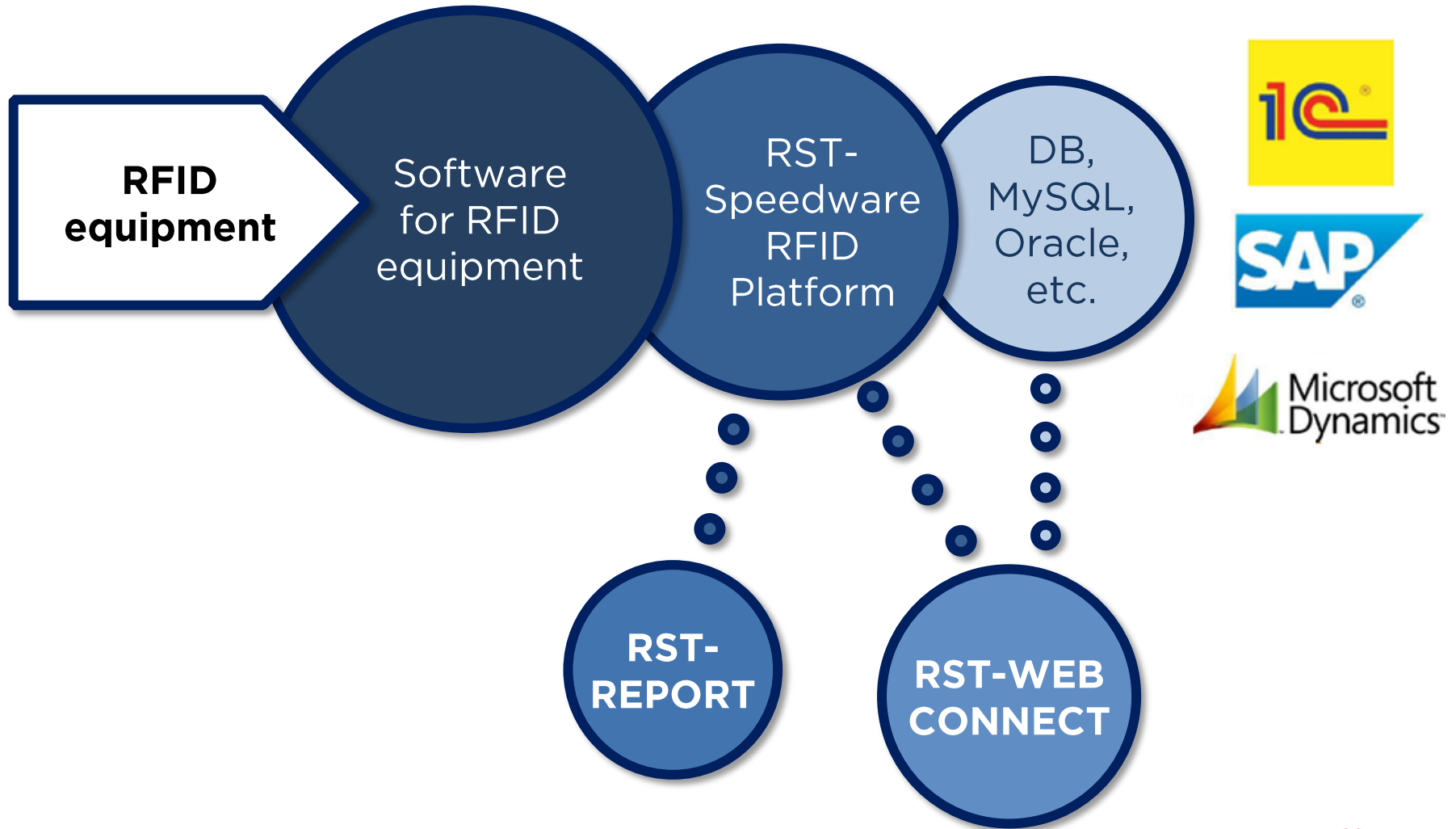
- Designed to showcase jewelry
- Displays product information online
- Informs customers about various promotions for jewelry
- Collects statistics to analyze product demand



RFID printer

Designed for mass storage of information in the memory of an RFID tag and printing of relevant information on a jewelry tag

Software architecture solutions

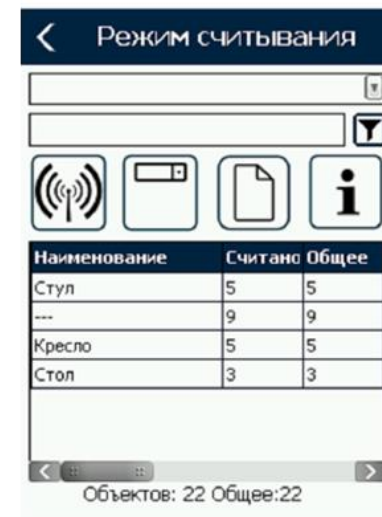


RST-Inventory software

RST-Inventory - the software is intended for primary marking, re-marking of goods, search, inventory and selection of objects marked with RFID tags or jewelry RFID labels.

The software writes identifiers to the memory of RFID tags and sends data about the performed actions to an external information system.

RST-Inventory integrates with the existing customer accounting system.



Primary marking / re-marking

In the “Marking” mode, RFID tags are glued onto accounting objects and their identifier code is compared with the name in the inventory list.

As a result of marking, the read RFID tag will be assigned the item nomenclature of the object from the IP. After sending the report, this information will appear in the IP.

Stages:

Номер	Идентификатор	Дата	Тип
18233	AE8832D	12.03.20	Догово
18233	AE8832D	12.03.20	Догово
9462	LO6G545	13.03.20	Догово
9462	LO6G545	13.03.20	Догово
9462	LO6G545	13.03.20	Догово
1283	mark176	08.08.20	Догово

Task creation

Идентификатор	Система	Общее
Стул	0	10
Клаватура	1	1
Доска	0	2
Стол	1	1

Marking task selection

Идентификатор	Система	Общее
Стул	A128	
Стул	A128	
Стул	A128	
Стул	A128	
Стул	A128	
Стул	A128	

Select a marked product from the list

Номенклатура: Стул

EPC RFID-метки текущее значение

Новое значение

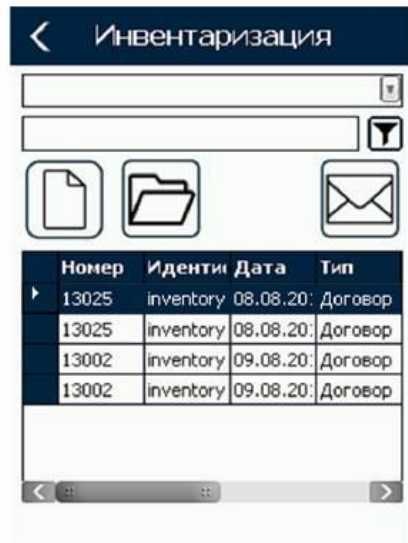
Дополнительная информация

Recording mode

Inventory

The “Inventory” mode is the main component for conducting an inventory, search and write-off of fixed assets of an enterprise. As a result of the actions taken, a report is generated on the correspondence of information from the IP to the actual presence of objects in a specific location. Also, if the reader detects objects that are irrelevant to this location, the system will automatically notify the user of this and send a notification to the IP.

Stages:



**Inventory task
selection**



Reading Mode

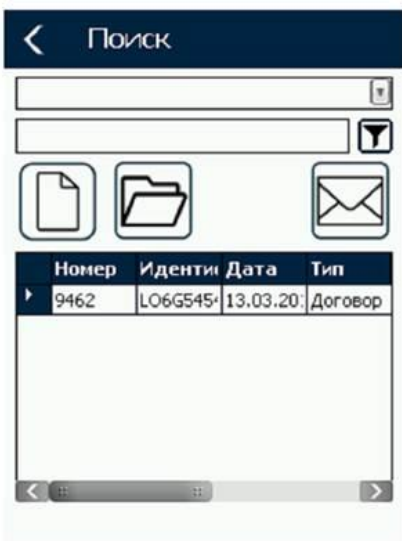


Filter by item

Search

Carries out an accurate search for accounting objects recorded in the inventory sheet. As a result of the actions taken, a report is generated on the availability of a particular object. Also, if the reader detects objects that are irrelevant to this location, the system will automatically send a notification to the IP.

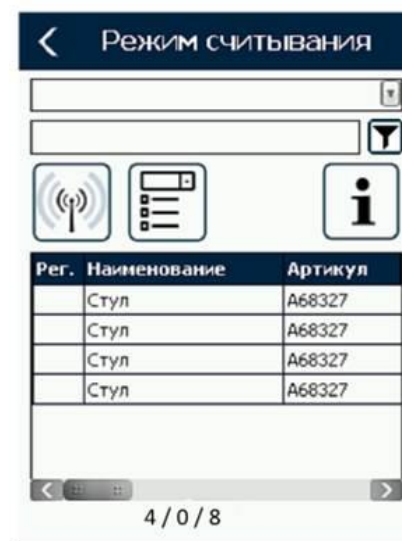
Stages:



Search task selection



Reading Mode



Filter by item position and display expanded list

Company introduction

RST-Invent – is a Russian RFID-tags and equipment vendor, RFID-system and software developer.



Work experience since 2005



Own RFID-tags and equipment facilities in the Leningrad region



**Geographic reach:
RF, USA, Asia, Europe**



**A full cycle of competencies in RFID:
from the development of the element
base to the implementation and
maintenance of ready-made solutions**

"RST-Invent" company - is part of the Group of "Systematic"

GCS

Contact information



Saint-Petersburg

Nepokorennikh pr., 49,
office 701

+7 (812) 318-17-17



Moscow

str. Nametkina, 10A,
building. 1, office 112

+7 (495) 640-78-48

✉ info@rst-invent.ru

🌐 www.rst-invent.ru